



TRANSPORTATION CABINET

Frankfort, Kentucky 40622
www.transportation.ky.gov/

Steven L. Beshear
Governor

Michael W. Hancock, P.E.
Secretary

December 3, 2014

CALL NO. 103
CONTRACT ID NO. 144208
ADDENDUM # 2

Subject: Hardin County, HSIP 0311 (030)
Letting December 12, 2014

- (1) Revised - Typical Section - Page 46 of 113
- (2) Revised - Detail Sheet - Page 48 of 113

Proposal revisions are available at <http://transportation.ky.gov/Construction-Procurement/>.

If you have any questions, please contact us at 502-564-3500.

Sincerely,

A handwritten signature in blue ink that reads "Diana Castle Radcliffe".

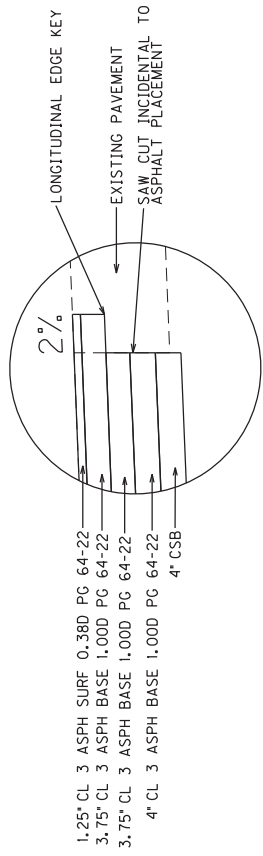
Diana Castle Radcliffe
Director
Division of Construction Procurement

DR:ks
Enclosures

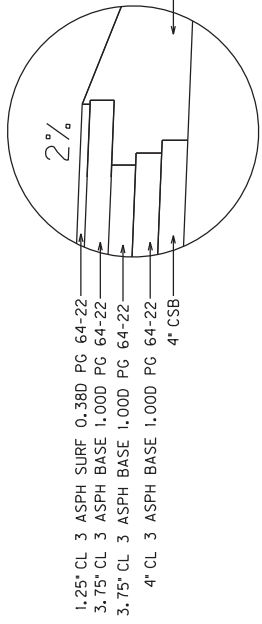


An Equal Opportunity Employer M/F/D

4-931 TYPICAL SECTIONS

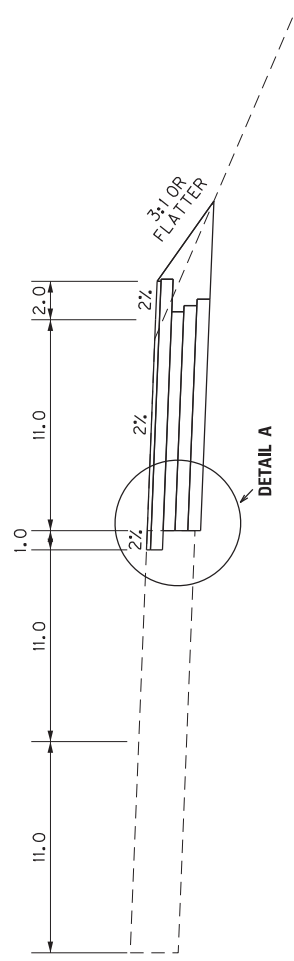


DETAIL A



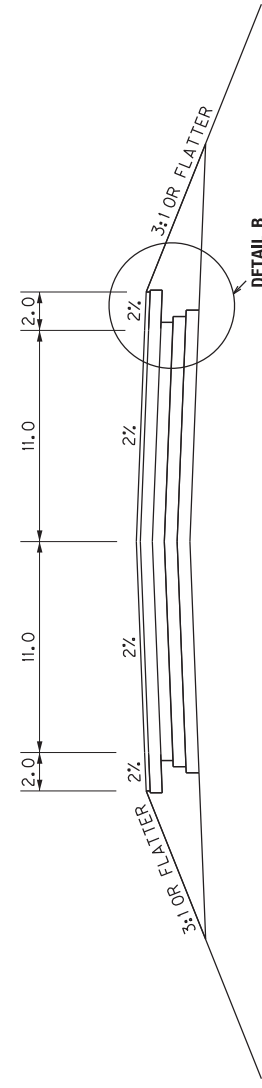
DETAIL B

US31W SOUTHBOUND LANE ADDITION
& RIGHT TURN LANE ONTO VETERANS WAY
STA 190+50 TO STA 208+00



DETAIL A

US31W RIGHT TURN PEAR ORCHARD NW
STA 189+00 TO STA 190+50



DETAIL B

CABINET DR TYPICAL SECTION
REPLACEMENT OF CONCRETE APPROACH

PAVEMENT DESIGN

MAINLINE FULL DEPTH AND WIDENING & CABINET DR
 1.25" CL3 ASPHALT SURFACE 0.38D PG 64-22
 3.75" CL3 ASPHALT BASE 1.00D PG 64-22
 3.75" CL2 ASPHALT BASE 1.00D PG 64-22
 4.00" CL2 ASPHALT BASE 1.00D PG 64-22
 4.00" CRUSHED STONE BASE

RIGHT TURN LANE INTO VETERANS BLVD
 1.25" CL3 ASPHALT SURFACE 0.38D PG 64-22
 3.75" CL3 ASPHALT BASE 1.00D PG 64-22
 3.75" CL2 ASPHALT BASE 1.00D PG 64-22
 4.00" CL2 ASPHALT BASE 1.00D PG 64-22
 4.00" CRUSHED STONE BASE

RIGHT TURN LANE INTO SW PEAR ORCHARD RD
 1.25" CL3 ASPHALT SURFACE 0.38D PG 64-22
 3.75" CL3 ASPHALT BASE 1.00D PG 64-22
 3.75" CL2 ASPHALT BASE 1.00D PG 64-22
 4.00" CL2 ASPHALT BASE 1.00D PG 64-22
 4.00" CRUSHED STONE BASE

SCALE: 1" = NA

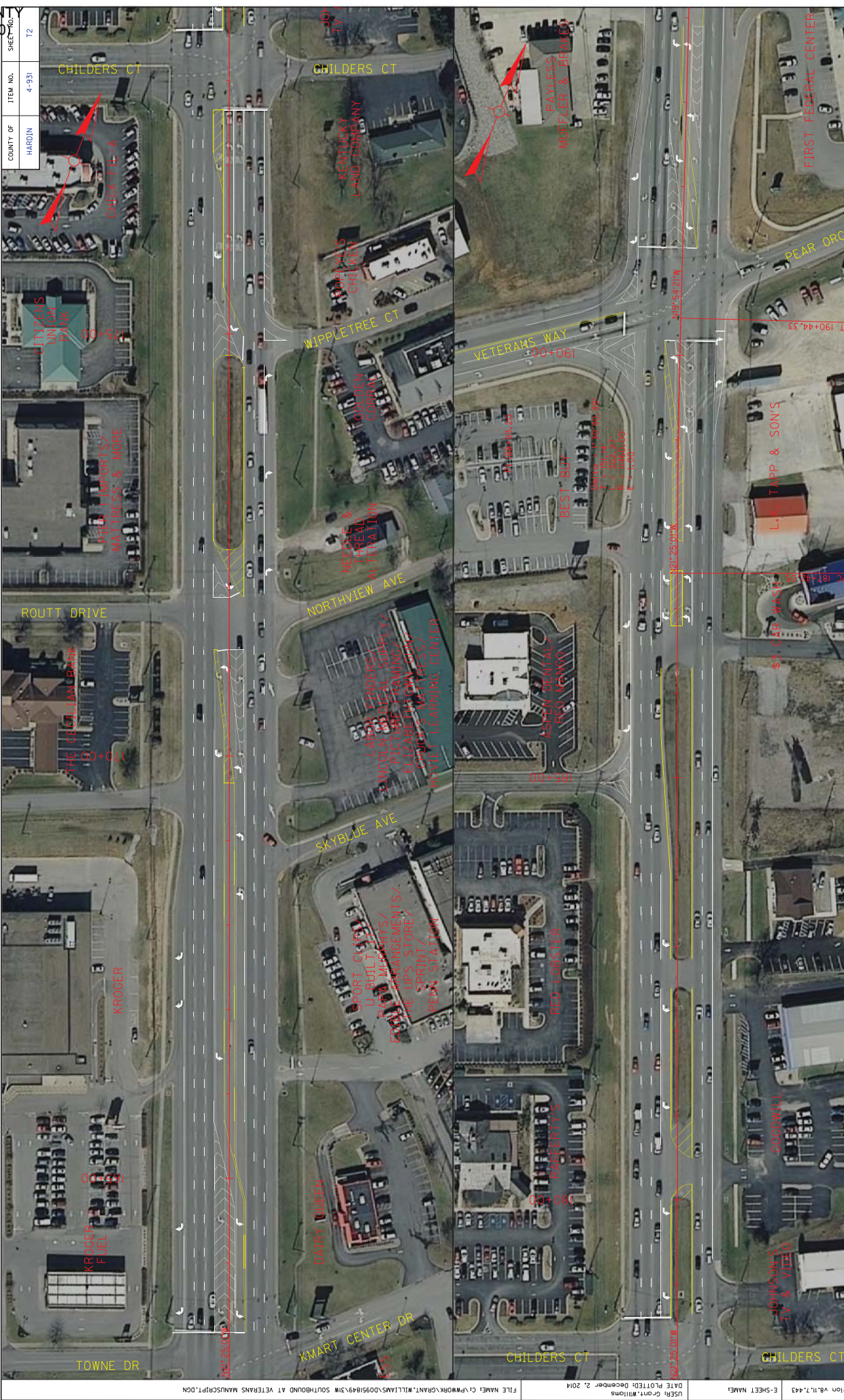
COUNTY OF	ITEM NO.	SHEET NO.
HARDIN	4-931	NA

4-931 TYPICAL SECTIONS
US31W SAFETY IMPROVEMENT

US 31W DIXIE HIGHWAY
SAFETY IMPROVEMENTS
STA 163+00 - STA 194+00

HARDIN COUNTY
HSIP 0311 (030)

COUNTY OF	ITEM NO.	SHEET NO.
HARDIN	4-931	12



US31 GRANT MILLIONS
DATE PLOTTED: December 2, 2014
FILE NAME: C:\PWORK\GRANT\MILLIONS\0951849\31W SOUTHBOUND AT VETERANS MANUSCRIPT.DGN

E-SHEET NAME: 0810117.443

MicroStation V8.11.7.443

SCALE: 1"= 50'

PT 181+43.50

PT 190+44.33

PT 194+00

PT 187+43.50

PT 187+43.50

PT 187+43.50

PT 187+43.50

PT 187+43.50

PT 187+43.50

PT 187+43.50

PT 187+43.50

PT 187+43.50

PT 187+43.50

PT 187+43.50

PT 187+43.50

PT 187+43.50

PT 187+43.50

PT 187+43.50

PT 187+43.50

PT 187+43.50

PT 187+43.50

PT 187+43.50

PT 187+43.50

PT 187+43.50

PT 187+43.50

PT 187+43.50

PT 187+43.50

PT 187+43.50

PT 187+43.50

PT 187+43.50

PT 187+43.50

PT 187+43.50

PT 187+43.50

PT 187+43.50

PT 187+43.50

PT 187+43.50

PT 187+43.50

PT 187+43.50

PT 187+43.50

PT 187+43.50

PT 187+43.50

PT 187+43.50

PT 187+43.50

PT 187+43.50

PT 187+43.50

PT 187+43.50

PT 187+43.50

PT 187+43.50

PT 187+43.50

PT 187+43.50

PT 187+43.50

PT 187+43.50

PT 187+43.50

PT 187+43.50

PT 187+43.50

PT 187+43.50

PT 187+43.50

PT 187+43.50

PT 187+43.50

PT 187+43.50

PT 187+43.50

PT 187+43.50

PT 187+43.50

PT 187+43.50

PT 187+43.50

PT 187+43.50

PT 187+43.50

PT 187+43.50

PT 187+43.50

PT 187+43.50

PT 187+43.50

PT 187+43.50

PT 187+43.50

PT 187+43.50

PT 187+43.50

PT 187+43.50

PT 187+43.50

PT 187+43.50

PT 187+43.50

PT 187+43.50

PT 187+43.50

PT 187+43.50

PT 187+43.50

PT 187+43.50

PT 187+43.50

PT 187+43.50

PT 187+43.50

PT 187+43.50

PT 187+43.50

PT 187+43.50

PT 187+43.50

PT 187+43.50

PT 187+43.50

PT 187+43.50